

PARTNERS

Winter 2017 / Maryland State Department of Education / Division of Early Childhood Development

Important Information Regarding Criminal Background Checks

The Federal Child Care Development Block Grant (CCDBG) Act of 2014 includes provisions to protect the health and safety of children in child care. With this re-authorization came many new requirements, one of which is related to criminal background histories, sex offender registry checks and child protective services checks for individuals working with children in child care facilities.

The following components are required for a complete criminal background check:

- 1) A Federal Bureau of Investigation fingerprint check using Next Generation Identification;
- 2) A search of the National Crime Information Center's National Sex Offender Registry; and
- 3) A search of the following registries, repositories, or databases in the **State where the child care individual resides and each State where such individual resided during the preceding 5 years:**
 - A) State criminal registry or repository, with the use of fingerprints being required in the State where the staff member resides, and optional in other States;
 - B) State sex offender registry or repository; and
 - C) State-based child abuse and neglect registry and database.



The Maryland Annotated Code currently requires employees in child care facilities to apply for Maryland criminal history checks (Family Law Article §5-561), and to apply for Maryland child abuse and neglect clearances (Education Article §9.5-414) even if they reside in another State.

What this means for you

Section 658H(d) of the Act requires child care providers to submit requests for background checks for child care staff employed for compensation; individuals whose activities involve the care or supervision of children for the child care provider, individuals who have unsupervised access to children in care; or for any individual residing in a child care home who is age 18 and older. The requests must be submitted prior to employment and must be completed at least once every five years. **For staff members employed prior to the enactment of the CCDBG Act of 2014, the provider must request a background check prior to September 30, 2017 and at least once every five years.**

Child care providers applying for the Maryland CBC will be able to enroll in a "rap back" program. By enrolling in this program the need for a new background check every five years will not be required. A rap back program works as a notification service and is free.

Individuals residing in another state but working in Maryland, must have a background check completed in their state of residence and in Maryland. More information on this to come.

Don't do anything yet! Child care providers and staff in Maryland will SOON be able to enroll in the rap back program. All providers and staff will have to be re-fingerprinted to enroll in the program. Once enrolled there will be no need to be re-printed every 5 years as required by the law. Please watch future issues of Partners for more articles on this topic. We will let you know as soon as the rap back program becomes available in Maryland. Do not

rush out to get fingerprinted now as you will just have to do it again once the rap back becomes available. Stay tuned!

For more information on the changes required by the CCDBG Act of 2014, please visit the following links:
<https://www.acf.hhs.gov/occ/resource/ccdbg-of-2014-plain-language-summary-of-statutory-changes>

<http://www.ncsl.org/ncsl-in-dc/standing-committees/health-and-human-services/the-child-care-and-development-block-grant-ccdbg-act-of-2014-reauthorizing-the-child-care-and-development-fund-ccdf-program-635938974.aspx>

PreK Expansion Grant Request for Proposals (RFP) will be available on March 1st. Visit...
<http://earlychildhood.marylandpublicschools.org/prek-grade-2>
to download the application.

What's Inside!

- NEWS..... pg 3
- JUDY CENTERS..... pg 11
- PROFESSIONAL DEVELOPMENT..... pg 14
- RESOURCES..... pg 16
- PAST EVENTS..... pg 18
- CHILDREN'S ACTIVITIES..... pg 19
- UPCOMING CONFERENCES..... pg 20



Division of Early Childhood Branches Out with Giving Tree



As part of the holiday season, the Maryland EXCELS Branch coordinated a Giving Tree project for donations from Division staff to the PACT Therapeutic Nursery located in Baltimore City. The nursery offers specialized child care services for children under the age of three and their families that either currently live in homeless shelters or have experienced homelessness but

now live in the community. The program focuses on mental health interventions to promote parent and child attachment and enhance stability in the family. On December 21st, Division staff delivered the donations of mittens, hats, bottles, blankets, and books to the program. We hope to make it a tradition to have a Giving Tree for a program or provider each year.

(From left to right) Andrea Zabel, MSDE Maryland EXCELS Quality Measurement Specialist Denise Beasley, MSDE, Grants Administrator, Collaboration and Program Improvement Branch. Giving Tree recipient, Chanay Robbins and Lindi Budd, MSDE Maryland EXCELS Branch Chief

Stay up-to-date with all MSDE's Early Child Development Information

Subscribe To Email and SMS Alerts



The subscription-based email and text alerts deliver important DECD information directly to your desktop or mobile device.

Sign up only for topics that interest you:

- ◆ Early Learning Updates
- ◆ Maryland EXCELS
- ◆ Regulation Updates and Announcements
- ◆ Training Announcements
- ◆ Child Care Subsidy
- ◆ And much more...

How It Works

To sign up you need a valid email address. To receive text messages you need a valid mobile number - look for the "SMS/Text Message" option in the "Subscription Type" option during signup. Then select the topics you're interested in and we'll send you the updates. You'll receive a confirmation notice on the DECD website and in your email afterwards. You can always log in to your subscriber preferences page anytime to manage your subscriptions or cancel your account.

No User Fees

DECD and MSDE do not charge recipients to receive text messages. However, messaging and data rates may apply. Check your wireless plan for details and read the complete Terms and Conditions.

Great News...Licensing Manuals for All License Types Are Now Available Online

The Child Care Manuals were created to use as a reference for Office of Child Care (OCC) licensing staff, licensed and registered child care providers, and for those who apply to become child care providers. Each Manual primarily provides assistance in interpreting and applying Code of Maryland Regulation (COMAR) requirements when conducting compliance inspections of child care facilities. By providing a comprehensive set of interpretive guidelines, the Manuals enable licensing staff and child care providers to assess compliance in a consistent and equitable manner.

Manuals are divided into chapters. Each chapter corresponds to the chapter number and subtitle of the related COMAR. Chapters and subtitles include the full text of the regulations found in that subsection of the chapter, the intent of the regulation, the method by which compliance with the regulation is assessed, and reference notes, as applicable. The text of each regulation appears in bold type. The guidance information appears in italics. All manuals are available in the Licensing section of the DECD website.

- ◆ The **Family Child Care Registration Manual** providing assistance for COMAR 13A.15
- ◆ The **Child Care Center Licensing Manual** providing assistance for COMAR 13A.16
- ◆ The **Letters of Compliance Manual** providing assistance for COMAR 13A.17
- ◆ The **Large Family Child Care Manual** providing assistance for COMAR 13A.18

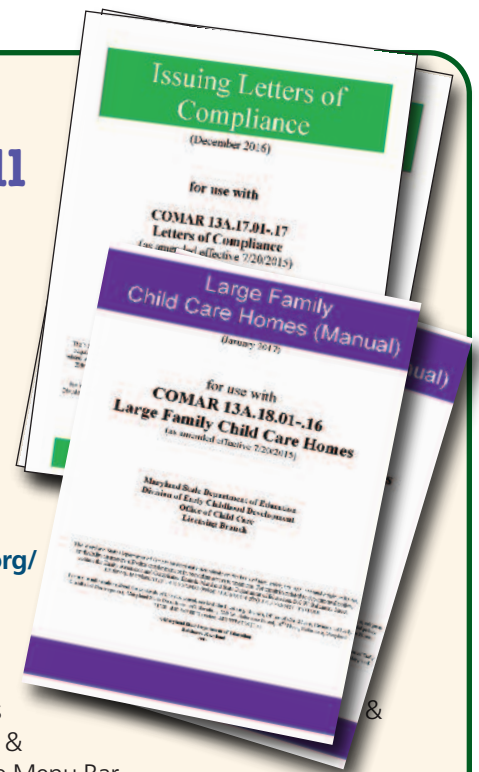
Get the Latest Licensing Branch Information in One Place

The Licensing News and Updates page can be accessed directly at: <http://earlychildhood.marylandpublicschools.org/news-announcements/licensing-news-updates>

It can also be accessed by clicking the Licensing News & Updates tab in the News & Announcements tab on the Menu Bar.

Some of the recent news and updates available on the page include:

- ◆ The release of the Child Care Manuals (Learn more about the manuals above)
- ◆ Updates to the Criminal Background Requirements and Process
- ◆ CJIS fee changes for criminal background checks
- ◆ Change to the acceptable form of payment for fingerprinting services



Subsidy 4-1-1

For programs to receive Child Care Subsidy reimbursement, they must participate in the quality rating and improvement system, Maryland EXCELS. If you are looking for training on Maryland EXCELS or need support for meeting EXCELS standards, attend a workgroup session with other providers and get individual help. A training calendar and schedule is available on marylandexcels.org.

Need to contact Child Care Subsidy (CCS) Central? **Call 1-866-243-8796**

Submit completed vouchers to:
Child Care Subsidy
PO Box 17015
Baltimore Maryland 21297
Fax: 410-229-0053

Submit Invoices to:
Fax: 410-229-0100



Did you know ?

Anyone who is interested in starting a child care business in a home or center is required to complete an online orientation session as the very first step to getting a child care center license or a large family or family child care registration.

The virtual orientation session walks new providers through all of the steps required to obtain a child care center license or a large family or family child care registration. This training also connects providers with all of the forms that they will need to complete an application; it is available 24 hours a day.

For more information about Orientation or other Licensing matters visit: <http://earlychildhood.marylandpublicschools.org/child-care-providers/licensing>

DECD Engages Families with Family Engagement Toolkit

The *Early Childhood Family Engagement Framework Toolkit: Maryland's Vision for Engaging Families with Young Children* is now available online and includes links to various resources. The toolkit offers strategies for early childhood educators and providers to effectively engage their families with young children.

The toolkit was created from *The Early Childhood Family Engagement Framework: Maryland's Vision for Engaging Families with Young Children* and was designed to support all early childhood educators and providers as they implement the goals of the Family Engagement Framework.

With funding from the Kellogg Foundation, the development of the toolkit was a collaborative effort among early childhood practitioners across the state, sharing their best practices to support all early care and education programs as they improve and increase their family engagement practices.

The toolkit can be found on the MSDE Early Childhood website:

<http://earlychildhood.marylandpublicschools.org/family-engagement-framework>



The Early Childhood Family Engagement Framework Toolkit:

Maryland's Vision for Engaging Families with Young Children

Developed by: @ Early Childhood Engagement on the

2016 Kindergarten Readiness Assessment Data Released

This is the third year the Maryland State Department of Education has administered the Kindergarten Readiness Assessment (KRA). The Assessment includes 50 items that measure the end of Prekindergarten skills, knowledge, and behaviors that are needed by students to be ready for curriculum based on the kindergarten's College and Career-Ready standards.

Recent legislation requires that the KRA now be administered to a sample of students and be completed by October 1st of each school year. Districts, schools, and individual teachers also had the option of continuing to administer the KRA to all of their kindergarten students. This year eight systems, as well as some additional schools and teachers, did choose this option. Sixteen school systems administered the KRA to a random sample of students in each classroom.

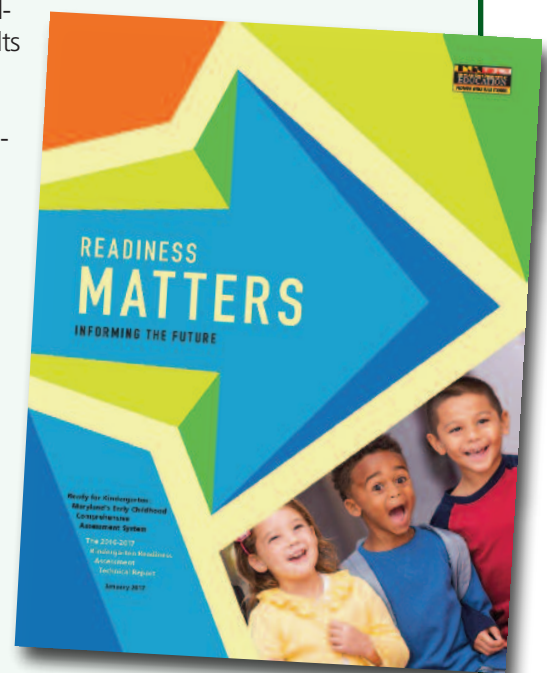
A look at the 2016 State Overall Results:

- ▼ **43% Demonstrating Readiness** - Students have mastered most of the prekindergarten skills, knowledge, and behaviors and are ready to engage in kindergarten curriculum.
- ▼ **38% Approaching Readiness** - Students demonstrated some of these prekindergarten standards, so kindergarten teachers will need to differentiate their instruction to provide support to close any gaps these students may have in the 4 different domains.
- ▼ **19% Emerging Readiness** - Students demonstrated minimal mastery of the foundational skills, knowledge, and behaviors that are needed to prepare them for the kindergarten curriculum. These students will need significant differentiated instruction, interventions, and support to close their achievement gaps.

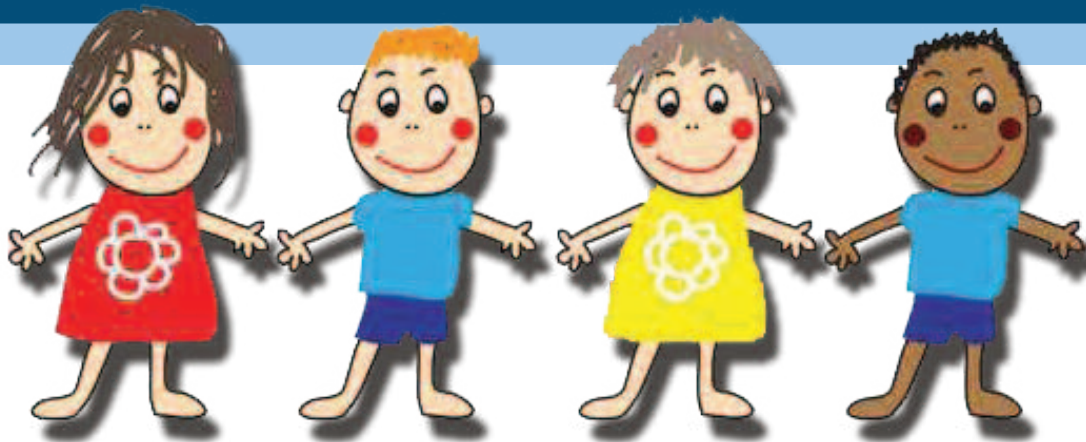
2016 State Results by Domain

- ▼ **40% Demonstrating Readiness** - Language and Literacy
- ▼ **38% Demonstrating Readiness** - Mathematics
- ▼ **53% Demonstrating Readiness** - Social Foundations
- ▼ **55% Demonstrating Readiness** - Physical Well-being and Motor Development

Readiness Matters – the full book and publications reporting the results of the 2016-17 Kindergarten Readiness Assessment is available in print and on Ready At Five's website www.readyatfive.org. Ready At Five encourages everyone invested in early childhood to use the results of the assessment to inform community and jurisdiction stakeholders and elected officials about the assessment results and to use the data to make decisions about early childhood programs and services and financial support for Maryland's youngest learners.



Early Learning Assessment



Child care programs, Head Start, and public school systems across the state have recognized the value in using the Early Learning Assessment (ELA) for children 3 to 5 years of age. The skills, knowledge and behaviors of the ELA are aligned with the Maryland College and Career Ready Standards and the Kindergarten Readiness Assessment (KRA). The ELA covers seven domains of learning: language & literacy, mathematics, social foundations, physical well-being & motor development, science, social studies and the fine arts.

Certified trainers are currently providing training to child care programs through a MSDE grant to the Maryland Family Network (MFN). For training information contact Jennifer Lentz at MFN: jlentz@marylandfamilynetwork.org
For questions about the ELA contact Robert Wagner at MSDE Robert.wagner1@maryland.gov.

Training time for the ELA - 12 hours over several three or six hour sessions

- Cost - Trainer fee
- Free - ELA paper kit, online system, and parent reports
- Interested in the next ELA training? Go to: <http://bit.ly/elainterest> by July 15, 2017. Training will begin in August.

For more information on the ELA, go to: <https://connect.johnshopkins.edu/p13p9bqp64a/>



Preschool Development Grant Program to Continue

On November 30th, 2016, U.S. Secretary of Education, John B. King, Jr. visited John Ruhrah Elementary School and Judy Center to discuss the importance of high-quality Prekindergarten and comprehensive services for PreK Students. Maryland State Superintendent Dr. Karen Salmon and Baltimore City Schools CEO Dr. Sonja Brookins Santelises hosted Secretary King and provided him with a tour of the Judy Center and the PreK classrooms. During his visit, Secretary King announced that 18 states will receive more than \$247.4 million in awards under the Preschool Development Grant program to continue their work in expanding access to high-quality preschool for children from low- to moderate-income families. Maryland is in its second year of this grant and received \$15 million in years one and two, and will receive \$15 million in years three and four.

The grant is jointly administered by the U.S. Departments of Education and Health and Human Services. The grant program has invested \$750 million and expanded access to new high-quality preschool classrooms, or improved classrooms, in 230 high-need communities across the U.S.

Last year, the Maryland legislature passed HB 668, Preschool Development Grants - Expansion Grants Required State Funding which will provide an additional \$3.7 million in FY 18 and \$7.3 million in FY 19 for the expansion of high-quality PreK as part of the State's funding match for the federal Preschool Development Grant. Applications to apply for PreK funding will be available on March 1st at the following link: <http://earlychildhood.marylandpublicschools.org/prek-grade-2> Applications are due Friday April 21, 2017. Programs wishing to apply should visit the website to download the application.

Credentialing Branch Updates



Do you want your bonus payment faster? You can sign-up for a "Direct Deposit" with the Maryland State Comptroller's Office and receive your credential bonus payment faster.



Set up a direct deposit to:

- Receive your bonus payment faster by receiving it directly into your banking account.
- Avoid having your check returned due to change of address after the check has been issued.
- Avoid theft.

Follow the steps below to set up direct deposit:

- Visit the website <http://comptroller.marylandtaxes.com/>
- Scroll to Vendor Services
- Click on Electronic Funds transfer
- Click on Form X-10
- Fill out direct deposit application form
- Submit the completed form through mail or Fax:
ACH Registration, General Accounting Division
Room 205, P.O. Box 746 Annapolis, Maryland 21404-0746
Fax to 410-974-2309



Training Voucher and Reimbursement Program

Receive up to \$400 each credential year for Training and Professional Development!

Training Vouchers and Reimbursement are designed to assist child care professionals participating in the Maryland Child Care Credential Program at Level Two or higher with the costs of training and professional development.

Funds can be used for:

- Approved Core of Knowledge Training
- Pre-Service Courses
- Registration at local, state and national child care conferences

Training Voucher and Reimbursement Applications can now be submitted online! Participants must be able to upload required documents for each application. Incomplete applications will not be processed. For more information, visit: <http://earlychildhood.marylandpublicschools.org/>

Training Voucher and Reimbursement Applications can also be mailed to:

MSDE-Credentialing Branch
200 West Baltimore St. 10th Floor
Baltimore, MD 21201

What you should know about...

Associated Parties

- If an applicant is not associated to the center listed on the application, it is placed in a queue.
- The licensing regional office and the applicant are notified.
- An initial, 30, 60 and finally 90 day notices are sent to the applicant and the licensing office.
- After 90 days, if the applicant is not associated to the center, a denial letter is sent to the applicant.

Trainings that haven't been approved by MSDE

Trainings that are not approved by the MSDE Training Approval Coordinator, or are not found in CCATS, are placed in a queue for review by the MSDE Training Approval Coordinator. Applications will not be processed by Child Care Central (CCC) until trainings have been reviewed by the Training Approval Coordinator. If approved, the trainings are then entered in CCATS; Denied

trainings are returned to CCC. Depending on volume, these applications may not be processed within 30 days.

The length of time it takes for these trainings to be reviewed varies depending on the type of training. College coursework, especially foreign degrees, could take longer than core of knowledge trainings.

Bad Party IDs (multiple party ids)

These applications will be not be processed by CCC until multiple party ids are merged. An applicant may have multiple party ids if participating in more than one

program within the State. It can take anywhere from one day to a week for multiple party ids to be merged.

Why are some Credential program applications not processed within 30 days?

Associated Party Issues

Center staff must be associated to the licensed child care center in the Child Care Automated Tracking System (CCATS).

If a center staff person is not associated to the center listed on the Credential program application, the application will not be processed by CCC until the licensing specialist associates the staff to the center listed on the Credential program application. These applications may not be processed within 30 days.

Timely processing of the credential application depends

on both the licensing specialist and the center director. The center director is responsible for informing the regional office of new staff immediately upon hire. The licensing specialist is responsible for associating the staff to the center after verification of employment (please note that other factors may affect this process and may cause a delay in associating a center staff to the center listed on the application).

Tip: Center Directors must inform the licensing specialist of a new hire. Do not submit a credentialing program application if the director has not informed the licensing office that you are currently employed at the center.

Child Care Credential Program Application Basics



Child Care Central
PO Box 598
Baltimore, MD 21203
Fax Number: 410.229.0145

Mail and fax your Maryland Child Care Credential program application to Child Care Central.

**Do not mail your application packet to MSDE. Applications received at the Maryland State Department of Education for the Maryland Child Care Credential program will be returned.*

The Child Care Career and Professional Development Fund (CCCPDF)

Are you interested in pursuing an associate's or bachelor's degree?

The Child Care Career and Professional Development Fund (CCCPDF) is a tuition assistance program for Child Care providers to obtain a college education at participating colleges/universities in Maryland. Funding is available for child care providers to earn a college degree in the following areas:

- Early Childhood Education
- Child Development
- Elementary Education
- Special Education

Eligibility Requirements:

CCCPDF applicants must meet the following requirements to receive funds (COMAR 13A.14.09):

- Participate in the Maryland Child Care Credential Program at Level Two or higher
- Work in a licensed child care center or be a registered family child care provider in Maryland and work at least 10 hours per week
- Fulfill entrance requirements at the participating college of your choice
- Have at least one year of documented experience working with groups of children in an approved setting
- Maintain employment in child care in Maryland while participating in the Program
- Participate in professional development
- Agree to complete the child care service requirement in Maryland for at least 10 hours per week after completion of the degree and/or withdrawal from the fund
- Maintain at least a 2.50 cumulative GPA from the point of first entering the Program

For more information about the application process and a list of participating colleges, please visit our website: <http://earlychildhood.marylandpublicschools.org/>

MARYLAND EXCELS U P D A T E S

KAPLAN and Maryland EXCELS Partner for Monthly Giveaway

Maryland EXCELS would like to congratulate our two January winners.

Good Shepherd Lutheran Preschool of Harford County and Ms. Arredondo, a family child care provider in Montgomery County, each won \$2,500 in Kaplan products. Our two winners were drawn at random just for being an active Maryland EXCELS participant. Now, both Good Shepherd Lutheran Preschool and Ms. Arredondo will receive a visit from their

local QAS and Kaplan representative, Julie Dobles, to assist them in selecting Kaplan products that will best fit their business and help move them up a QRIS level.

Make sure you are in Maryland EXCELS so you can experience all the benefits. Log on to www.marylandexcells.org today.



The InvestiGator Club announces Maryland EXCELS winners!

In November, Maryland EXCELS participating child care providers were all eligible to win The InvestiGator Club PreK with STEAM, MD Edition. This integrated comprehensive curriculum is complete

with all the literature, components, lessons, family engagement, assessment, and teacher support needed for a full year of culturally rich and science-based learning.

Congratulations to our winners:

Melissa Hudler of Hagerstown & Dayspring Head Start @ St. William of York #251315

For more information on The InvestiGator Club, visit: www.investigatorkit.com

Maryland Family Network Statewide Training Clearinghouse Calendar Announces New Features



Maryland Family Network's Statewide Training Clearinghouse Calendar is a free resource available to all child care providers to search for approved training workshops throughout Maryland. Advertised workshops include Core of Knowledge, Continued Training, First Aid and CPR certifications, conferences, and much more!

New features include:

- ◆ Search for approved training workshops scheduled at a trainer/organization's location
- ◆ Find approved trainers to come to your program/association
- ◆ Explore approved eLearning/online training

For more information visit: www.marylandfamilynetwork.org.

Maryland Family Network Welcomes Two New Board Members: *Renee McGuirk Spence and David Kelly*



Renee McGuirk Spence's career as an educator began in Baltimore City Public Schools in 1974, where she worked for eight years as a special education teacher with elementary students. Ms. Spence then worked in the Governor's Office for Children, Youth and Families, where she implemented statewide initiatives and programs. Ms. Spence spent the next 20 years as the Executive Director of Governmental Relations in the Office of the State Superintendent with the Maryland State Department of Education (MSDE). In this role she worked closely with the General Assembly and coordinated education policy and legislative operations.

After retiring from MSDE in 2014, Ms. Spence took on the role of Executive Director with the Public School Superintendent's Association of Maryland.

David Kelly is President of KELLY Payroll and KELLY Work Comp, as well as Executive Vice President of Sales and Marketing for

KELLY Benefit Strategies, the direct sales division of KELLY. In addition to these responsibilities, Mr. Kelly directs the business acquisition and facility management activities of the company.

In 1989, he joined KELLY full-time, with the responsibility of growing the firm's property and casualty insurance agency. In 1991, the agency was sold, to allow KELLY to focus on becoming a premier benefits broker/administrator. To ensure the smooth transition of the agency, Mr. Kelly was named President of the new corporation, Kelly-Murray Insurance Group. Upon returning to KELLY in 1994, he assumed responsibility for sales and marketing within KELLY Benefit Strategies.

Mr. Kelly is the President of the Board of the Dyslexia Tutoring Program, serves on the boards of River Valley Ranch, Maryland Shock Trauma, SENT Network, Penn-Marr Foundation, Stevenson University, and Cambridge School.

Maryland Family Network Unveils Upgrades to LOCATE: Child Care

Choosing child care is one of the most important decisions families will ever make. Maryland Family Network just made it easier. We are proud to announce the improved LOCATE: Child Care featuring:

- ▼ **A sleek new interface**
- ▼ **Real-time database updates**
- ▼ **Interactive bilingual maps with pinned results showing all the child care providers who match users search criteria**

Expanded provider information including—credentials, rate and vacancy (if provided), contact information, hours, pets, meals, and more!





Deputy Assistant Secretary Linda Smith Receives MFN's Grasmick Leadership Award

Linda K. Smith, Deputy Assistant Secretary for Early Childhood Development, U.S. Department of Health and Human Services was the 2016 recipient of Maryland Family Network's Dr. Nancy S. Grasmick Leadership Award in Early Care and Education. This award is given annually to a champion for children who has an outstanding record of accomplishments, exemplifies the commitment to young children, their families, their teachers, and child care providers that Dr. Grasmick embodied throughout her career. A driving force behind the implementation of the Child Care and Development Block Grant Act of 2014, Ms. Smith previously served as Executive Director of the National Association of Child Care Resource and Referral Agencies, staffed the Senate Health, Education, Labor & Pensions Committee under the chairmanship of the late Senator Edward Kennedy, and spearheaded the dramatic overhaul of military child care for the Department of Defense. Over the course of her distinguished career, Ms. Smith has emerged as

one of the nation's most vigorous and effective champions for young children, working families, and early childhood education.

Smith received the honor on December 7, 2016 at The Monocle restaurant in Washington, D.C. A short presentation featured remarks from Rep. Steny Hoyer (D-MD); Dr. Nancy Grasmick, Board Member, Maryland Family Network and past Maryland State Superintendent of Schools; Helen Blank, Director, Child Care and Early Learning, National Women's Law Center; Margaret Williams, Executive Director, Maryland Family Network; and Assistant Secretary Smith.

The Grasmick Leadership Award has been given annually since 2011. Past recipients have been Congressman Steny Hoyer, Sen. Barbara Mikulski, Maryland State Delegate Sheila Hixson, and State Senators Nancy King and Richard Madaleno.

2016 Grasmick L to R: N. Scott Phillips, past board member, Maryland Family Network; Dr. Nancy S. Grasmick; Helen Blank; Linda K. Smith; Margaret Williams, Executive Director, Maryland Family Network; Rep. Steny Hoyer.

Maryland Family Network Announces New Delegate Agency for Cecil Early Head Start



Maryland Family Network is pleased to announce a new partnership with the Maryland Rural Development Corporation (MRDC). Effective January 1, 2017, the MRDC became the permanent "Delegate," or local operator, of the existing Early Head Start program located at the Family Education Center in Elkton. The program is funded to serve 45 infants, toddlers, pregnant women, and their families.

Judy Center News

Allegany



Allegany County Judy Center Responds to Expansion by Strengthening Its Service Coordination Process

When the Allegany County Judy Center received a Federal Preschool Development Grant, it expanded services and learning opportunities to South Penn Elementary School. Many of the partners from the original Judy Center at Beall Elementary also partnered with the South Penn Judy Center. It immediately became clear that the service coordination components for the two centers needed to work together to maximize partner services and the use of everyone's time. Shella Navalaney, Service Coordinator of the Beall Judy Center, and Dan Snyder, Service Coordinator of the South Penn Judy Center, saw this as an opportunity for the partner programs to develop a Service Coordination Team that meets the needs and benefits of the families at both locations.

On August 8, the Judy Center hosted a Service Coordination Retreat at Fore Sisters Resort. The goals of the retreat were to clarify the Service Coordination Team's processes and after

practices; identify solutions to maximize the Service Coordination Team's efforts and make meetings more efficient; increase member participation and the ownership of each partner's role in the service coordination process; and strengthen the partnership and practices to maximize service delivery to the families served by both Judy Centers. Partner programs who attended included the Department of Social Services, WIC, Family Junction, Family Support Services, Head Start, Birth through 5, and Adult Education.

The retreat produced outcomes that support the Judy Centers and their families. It helped everyone to focus on and understand their importance and value in the service coordination process. Partners helped to redesign outdated forms and each partner identified a substitute that would attend the service coordination meeting if they were unable to attend. Through the tenacity and dedication of the partners, the Allegany County Judy Centers have a recharged and reinvigorated service coordination process.

Charles



Christmas Angels Make Wishes Come True at the Charles County Judy Center

The Charles County Judy Center serves children and families living in the Dr. Samuel A. Mudd, C. Paul Barnhart, J.P. Ryon and Eva Turner Elementary School zones. The Judy Center often boasts about the kindness of the Charles County community and this past holiday season supported that. In past years, the Charles County Judy Center has had the fortune of having several agencies adopt families for Christmas. This year, the reduction in the number of agencies able to provide for an entire family led the Judy Center to seek other ways to help as many families as possible.



Charles County Judy Center Christmas Angels L-R Amanda Pheulpin, Amanda Herridge, Creshendle Kennedy and Margo Alam sort donated gifts for needy families.

Continued on Pg. 12

Judy Center News

Continued from Pg. 11

At the November Steering Committee Meeting, Judy Center partner organizations were asked to review color coded gift tags from each of the four schools served by the Judy Center and select one or more tags. Each tag had one item a family member truly wanted or needed for Christmas. Some wishes included food, coats, winter clothing and, of course, toys. The partners came to the rescue, and purchased gift cards for food and coats for each child in need, as well as toys and books. The Judy Center staff and partners also reached out to their own families and were able to purchase almost 100 percent of the items each family requested.

Carolyn Carter, Director of Good Shepherd Educational Center, contacted the Judy Center stating her teachers wanted to help. The Charles County Department of Social

Services, Health Department and Public School Staff enlisted the support of friends and family members to help the teachers. One particularly touching statement made by Megan Burroughs from the Charles County Public Library was, "Santa can't bring one sibling a bike and not his big sister...I'll purchase the remaining bike."

On December 12, the Christmas Angels (partners) met the Judy Center staff at the Waldorf West Library to drop off the wrapped, new gifts for the Center staff to deliver to the families. By donating over 150 items, everyone's generosity provided Christmas joy to 13 needy families within the catchment areas of the four schools.

"That's what Christmas is all about; giving to those who need it most."

Montgomery



The Montgomery County Judy Centers and FSNE: A Delicious Partnership!

The University of Maryland Extension Food Supplement Nutrition Education (FSNE) program has been a partner of the Montgomery County Judy Centers for several years. FSNE offers nutrition education for both children and parents at the Judy Centers; integrating concepts related to nutrition and wellness, math, science, literacy, physical education, and social studies that support school readiness and overall health and wellness.

This year FSNE increased its programming for children and families at the Gaithersburg (GJC) and Silver Spring (SSJC) Judy Centers. FSNE is utilizing the Edible ABC's component of Read for Health, a literacy-based nutrition and physical activity curriculum that also incorporates math and science into its lessons. Edible ABC's is used with children ages three and four to help them learn the alphabet. The lessons are designed for children to learn about and taste nutritious foods that start with each letter of the alphabet.

Additionally, at the GJC, FSNE is introducing Farm to



School and Gardening for Nutrition concepts to children and parents through the use of an onsite container garden. FSNE and GJC staff use Grow It, Try It, Like It! to provide families with opportunities for hands-on experience in planting and growing produce. Families help the GJC staff plant, care for, monitor, harvest, and taste fresh vegetables planted in the onsite garden. After each lesson, parents receive additional resources to continue learning at home through child/parent-centered activities and recipes. At the SSJC, children participate in Gardening for Nutrition through an after-school program. The garden is located in the courtyard of Rolling Terrace Elementary School.

Both the SSJC and GJC families visited the local farmers markets in the fall where parents and children learned about the benefits of buying local, seasonal produce. Additionally, parents participated in an onsite meal preparation session using

Continued on Pg. 13

Judy Center News

Continued from Pg. 12

purchased produce. FSNE will provide additional farmers market or grocery store tours for Judy Center families in the spring. FSNE offers nutrition education to parents and children at GJC family involvement events as well. FSNE is also working with the GJC program manager to provide a training for GJC child care partners. The training, 1-2-3 Feed Me!, teaches child care providers how to feed their children so they develop healthy habits, understanding that children eat many of their meals in child care. This integrated approach has allowed FSNE and the Judy Centers to extend these important lessons to children, families and the community.



Somerset




ABC Grocery Store Tours

Children and families in Somerset County had a unique experience this summer when families got to explore their local supermarket in a new and exciting way. The Somerset County Judy Center in Princess Anne and the Somerset County Health Department worked together to provide grocery store tours for children ages three to five and their families. This program had two main objectives: to teach parents how to shop for healthy foods on a budget and to teach children about healthy food choices through a fun literacy scavenger hunt.

Registered families were greeted at the store entrance and parents went with staff from the Health Department while the children went with Judy Center staff and volunteers to explore the store. The Health Department staff provided information about reading food labels, choosing healthy foods on a budget, ways to create easy healthy meals, cookbooks and other information. While the parents were working with the Health Department staff, the children searched the store for healthy foods that started with the letters of the alphabet:

"A is for Apple, B is for Broccoli, C is for Carrots, etc." The groups talked about the letters, the sounds they make, and then hunted for a food that began with each letter. When a food was discovered, staff snapped a picture while the children dictated some information about the food item. At the end of the tour, children were able to pick out one healthy food they had never tried before. The item was purchased and the children were able to take it home. One family went home with a coconut, one a yuka and one a zucchini!

A



Apples are fruit. Apples are red and sometimes they are green. You can eat the skin and the middle of an apple, but you can not eat the core.

Kayla Spady and Ugochukwu Oji featured in The Great Princess Anne Grocery Tour book.

Families also received a "goody bag" with healthy snacks and information from the Judy Center and the Health Department.

The children's words were typed up and together with their photos the information was sent off for "publishing" to create an awesome one-of-a kind Healthy Eating Grocery Store ABC book!

Professional Development

DECD Launches Career Center for Job Seekers and Employers

Since the release of the *Careers in Early Childhood Education: A Maryland Guide*, we've been focused on providing support and access to opportunities for students, parents, counselors, faculty, and career changers interested in early childhood education. We're excited to announce that we've launched our Career Center and Job Board on the DECD website.

From working directly with children or supporting those who do - there are lots of opportunities in the field of early childhood from which to choose. Whether you are a student considering a career in early childhood or an early childhood professional considering your career options, utilize the resources available in the Career Center to explore the many available career opportunities in Maryland.



Visitors looking for an overview of careers in early childhood education in Maryland can check out the Career Guide and anyone looking to advance in their early childhood career can find out how to on the Career Advancement page. Early Childhood Education degree seekers can locate the Early Childhood degree programs in their area on the Education page and find out about financial assistance and grants in the Scholarships section. The new Job Board is the destination for anyone looking for a new job or any employer with an open position.

The Career Center is just one more step in a series of plans we have relating to professional development, so keep your eyes out for more in 2017!

The Basics: Differences in CEUs and CPDs

MSDE accepts Continuing Education Units (CEUs) for the purpose of meeting clock hours for credentialing and yearly licensing training requirements. The training must be child care related and issued by a recognized accredited organization. Hours will be assigned under the following training types:

Core of Knowledge (COK) = Research-based, measurable objectives that are assessed, and a minimum of 2 hours in duration. Core of knowledge hours can be used to move up levels in credentialing. Half of required yearly training hours must be COK hours. For example, a director of a child care program is required to obtain 12 hours of training per year and at least 6 of those hours must be COK hours.

Continued/Elective Training = No minimum time requirement and must be child care related training. No assessment requirement. These hours can be used to maintain a credential level. These hours can also be

used to maintain half of the yearly training requirement for staff and are referred to in the regulation as "elective training" hours.

CEU conversion for accredited community college/university = 1.0 CEU is equivalent to 10 hours of training. CEUs issued by a School of Social Work or CEUs approved by the Association of Social Work are converted 1:1; 1.0 CEU is equivalent to 1 hour of training.

CPDs (Continuing Professional Development) hours are approved by Educator Effectiveness/Teacher Certification at the Maryland State Department of Education. CPDs will be accepted to meet credentialing hours and yearly licensing training requirements if presented on the appropriate formal CPD verification form and related to child care. The conversion for CPDs = 1.0 CPD is equivalent to 15 hours of training.



MSFCCA: Collective Voice on Family Child Care Issues in Maryland

The Maryland State Family Child Care Association (MSFCCA) represents Registered Providers in Maryland and membership is available through one of the many local Family Child Care Associations. MSFCCA has given members a voice in all issues relating to family child care and the children in their care and is one of the few state associations nationwide that has consistently been asked to provide input regarding regulatory review and changes in the profession. The goal of the MSFCCA is to remain the professional organization that has been serving early childhood professionals since 1983.

The association relies heavily on the expertise and experience of the family child care providers that have devoted their careers to the awareness of quality Family Child Care in Maryland. MSFCCA strives to keep Family Child Care the unique environment for learning that children and families seek to grow.

Benefits of membership include:

- ▼ Being part of a collective voice on child care issues.
- ▼ Access to legislative updates on regulatory and policy issues.
- ▼ Discounted cost to the annual Conference in Ocean City.
- ▼ Frequent opportunities to network with peers.
- ▼ An annual Legislative Rally in Annapolis.
- ▼ Group access to AFLAC insurance coverage.
- ▼ Opportunities to volunteer and earn PAUs for Credentialing.

Visit: www.msfccca.org to join MSFCCA and to make a difference!

Check out
MSFCCA.ORG for:

- ◆ Legislative news
- ◆ Regulatory Updates
- ◆ Contacts for local associations
- ◆ Training Opportunities
- ◆ National, State and Local Conference information
- ◆ Links to early care and education resources



Get Involved - Maryland Association for the Education of Young Children (MDAEYC)

Membership has its' privileges! Become a member of the MDAEYC to take advantage of professional opportunities available to MDAEYC members.

MDAEYC offers members:

- ◆ Professional development opportunities
- ◆ A chance to connect with other professionals in your community
- ◆ A voice in early care and education policy issues
- ◆ Accreditation support
- ◆ Professional Activity Units (PAUs) for membership to a professional association and PAUs for attending a national, state or local conference!

The mission of MDAEYC is to empower those who care for and educate young children. Their vision is to promote high quality early childhood education standards and to improve the status of the profession through education and compensation.

Becoming a member is easy! Visit: www.naeyc.com or www.mdaeyc.org and complete the online registration to become a member of NAEYC and MDAEYC simultaneously. For more info LIKE their Facebook page or contact: marylandaeyc@gmail.com via email or call 410-820-9196.



Top 5 Reasons to join the Maryland State Child Care Association (MSCCA)

Did You Know?

MSCCA membership is the ONLY association providing a full staff, comprehensive center membership, not an individual membership! All staff members employed at the center will be considered MSCCA members when your center joins.

Many of the MSCCA Member Benefits are directly related to Maryland EXCELS and Credentialing! Pay one affordable center membership fee and gain Professional Activity Units (PAU) for your full staff! Members of a state association receive a PAU for becoming a member of a professional organization. (Also accumulate additional PAUs for attending our statewide conferences, facilitating classes at our conference, contributing to our semi-annual newsletters and attending our Advocacy Night in Annapolis.)

MSCCA members have a dedicated, registered state

lobbyist along with an active MSCCA Board of Directors who monitor Senate and House bills each legislative session related to your professional interests and submit testimony on behalf of our members to advocate strongly for children, teachers and families.

MSCCA provides continuous, cutting edge communication emailed to members about relevant child care issues and topics.

There are discounts on quality training conferences and a new annual MSCCA/ Jennifer Nizer Grant/Scholarship opportunity offered to members only.

Visit: www.mscca.org to join MSCCA. For more info contact Christina Peusch, Executive Director at: mscca1@comcast.net or call 410-820-9196.

RESOURCES

Resources and Support to Help Infants and Toddlers Develop Social and Emotional Skills

SEFEL (Social and Emotional Foundations for Early Learning) is a framework that promotes the social and emotional development and school readiness of young children from birth through age 8. SEFEL promotes child social and emotional development and supportive environments. It helps support healthy development as well as communication, feeling identification, and important executive functioning.

SEFEL has been successfully implemented in a wide range of Maryland child care settings and elementary school settings. The SEFEL model is very much a team approach, experts not only offer training to Maryland's child care providers, but also to parents, home visitors, child welfare workers and first responders. Resources, including training opportunities, strategies, and activities to teach social emotional skills to your young learners are available for you at:

<http://theinstitute.umaryland.edu/sefel/index.cfm>.

Check out the MSDE's Foundations of Learning blog to get unique content that provides actionable advice and tips to early childhood care providers and parents.

<http://earlychildhood.marylandpublicschools.org/blog>



Healthy Beginnings: Supporting Development and Learning from Birth through Three Years of Age

Healthy Beginnings may not be that long-missing instruction manual for child care, but it is a tool that can help you give the very best you can to the infants and toddlers in your life.

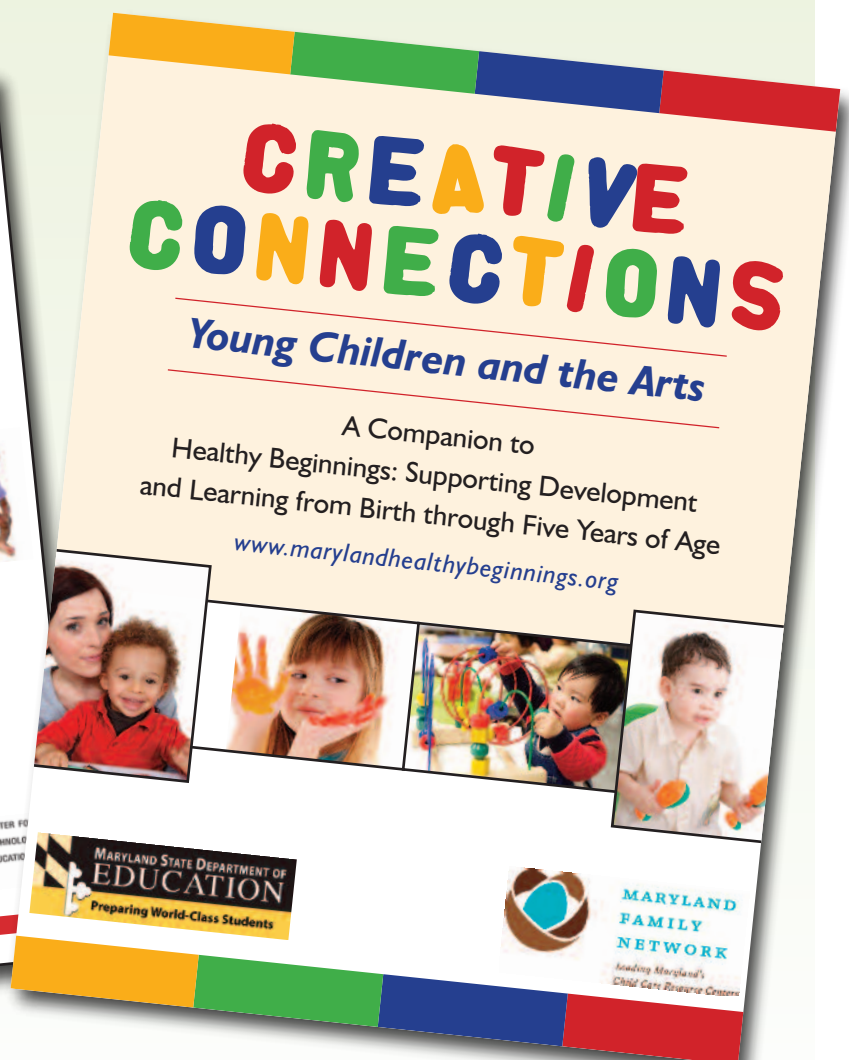
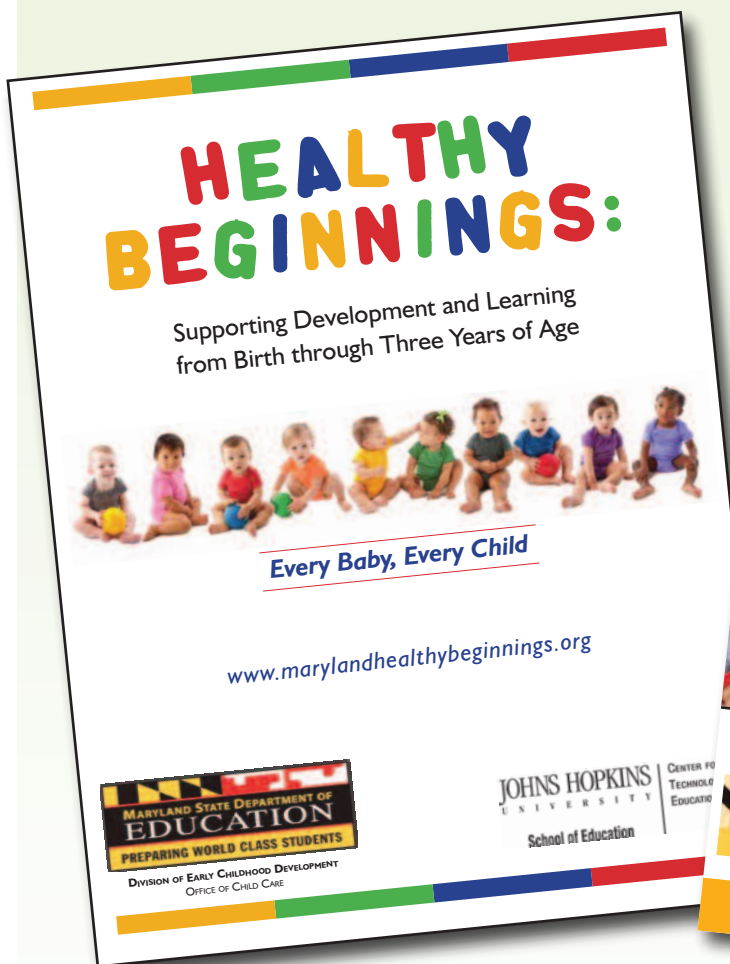
Healthy Beginnings is a resource to help you nurture the tremendous potential of each child for learning and growth. Specifically designed for caregivers of infants and toddlers from birth through age three, **Healthy Beginnings** provides knowledge and support around child care and child development, while the Activity Planner provides caregivers with fun, developmentally appropriate activities that build young children's skills and promote all kinds of learning.

A Companion Guide to **Healthy Beginnings, Creative Connections: Young Children and the Arts**, is also available.

Creative Connections supports parents and early childhood educators by providing helpful information and direction to better understand their children, share in appropriate arts activities, and use creative arts to foster full development of their children. It can be used as a reference guide, or as a resource for planning developmentally appropriate arts activities and experiences.

Healthy Beginnings and **Creative Connections** are only available online.

Visit: <http://olms.cte.jhu.edu/olms2/healthybeginnings> to view and download these resources.



PAST EVENTS



STEM Takes Center Stage at Ready At Five Readiness Symposium

We were thrilled to share our Ready At Five School Readiness Symposium "Ready, Set, STEM!" with over 235 participants on Tuesday, December 6, 2016 at Turf Valley Conference Center! Keynote Heidi Schweingruber, Ph.D began the day by enlightening us with "What STEM Looks Like in Early Childhood" and Michael Eisenklam and Bryan Shumaker of Carroll County Public Schools "Modeled the STEM Standards of Practice" with a hands on activity. The day concluded with two sets of fabulous concurrent workshops and a Gallery Walk featuring 17 different participants who shared their STEM ideas. Thank you to everyone who participated! Presentations from the Symposium are available on Ready At Five's website: www.readyatfive.org.



Ready At Five is also pleased to announce several exciting projects for 2017, including the pilot of Promoting Enrichment to Advance Language Skills (PETALS), which is a program based on the VIOLETS curriculum that is designed to support language and vocabulary development for children ages 2-3. On deck for the beginning of 2017 are the Math Practices Institute for Early Educators. Check us out at: www.readyatfive.org for more information and make sure to follow us on Facebook and Twitter!



Share Your Events with Maryland's Early Childhood Community

Is your organization hosting an upcoming event and you want to get the word out? Do you have exciting news to share? Submit your event to our Community Events Calendar and we'll help spread the word! If your event is appropriate and is approved, it will be posted on the Community Events page on the DECD website: <http://earlychildhood.marylandpublicschools.org/news-announcements/community-events>.

The calendar is open to the public and your submissions are welcome. List your event for free by emailing your community event submissions to: earlychildhood.msde@maryland.gov.

CHILDREN'S ACTIVITIES



TARGET®



\$2

Family Fun Night!

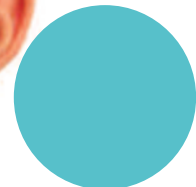
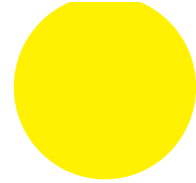
Bring the **whole**
family for a night of play
for just **\$2** per person!

4 - 8 PM | Special Activities
Save more than \$12 per person!

Upcoming Dates:
February 17, March 17

PORT DISCOVERY
Children's Museum

35 Market Place
Baltimore's Inner Harbor
410.727.8120
portdiscovery.org





Division of Early Childhood Development
Office of Child Care - J1014 / 200 West Baltimore Street
Baltimore, MD 21201-2595

PRSR STD
U. S. POSTAGE
PAID
BALTIMORE, MD
PERMIT NO. 7873

© Maryland State Department of Education
All Rights Reserved / Published March 2017

Upcoming Conferences



A publication from the
Maryland State Department of Education

Karen B. Salmon, Ph.D.
State Superintendent of Schools

Andrew R. Smarick
President, Maryland State Board of Education

Larry Hogan
Governor

Elizabeth Kelley
Acting Assistant State Superintendent
Division of Early Childhood Education

Alexis D. Washington
Editor-in-Chief

The Maryland State Department of Education does not discriminate on the basis of age, ancestry, color, creed, gender identity and expression, genetic information, marital status, disability, national origin, race, religion, sex, or sexual orientation in matters affecting employment or in providing access to programs.

For more information about the contents of this document, contact:

Maryland State Department of Education
Division of Early Childhood Development
200 West Baltimore Street
Baltimore, MD 21201

Phone: 410-767-0335 • Toll Free: 1-877-605-1539
410.333.6442 (TTY/TDD) • Fax: 410-333-6226

www.MarylandPublicSchools.org

Conference by the Sea May 5-7, 2017

Maryland State Child Care Association (MSCCA)

Plan your Professional Development around the opportunity to earn more than 17 hours of Core of Knowledge MSDE approved, quality training! Use your MSDE training voucher and get all the continued training hours needed while you climb the credentialing ladder. Enjoy exhibitors, prizes, networking and fun. Members pay less!

Visit: www.mscca.org
for more info,
membership, and registration.

Clarion Resort Fontainebleau
10100 Coastal Highway
Ocean City, MD 21842

Call - 800-638-2100 / 410-524-3535
info@clarionoc.com

Maryland State Family Child Care Association

25th ANNUAL CONFERENCE October 13-14, 2017

Come join us for a fantastic conference filled with education, networking and friends. Don't miss out on this fun, refreshing, inspiring weekend where you can receive excellent training.

www.msfcc.org
rubbygd@verizon.net

Carousel Oceanfront Hotel and Condos
11700 Coastal Highway Ocean City,
Maryland

Family Child Care Association of
Montgomery County, Inc.

Annual State Conference March 25th, 2017

LET'S KEEP IT ROLLIN'

Bob Kann

Storyteller / Juggler / Magician

6 COK Hours + 1 PAU

JHU - Montgomery County Campus
9601 Medical Center Drive
Rockville, MD 20850

Contact

Jacqueline.n.grant@gmail.com
or (240) 994-0292

Join The Conversation!

<https://www.facebook.com/MdPublicSchools> <https://twitter.com/MdPublicSchools> <https://www.youtube.com/user/msdetv>