

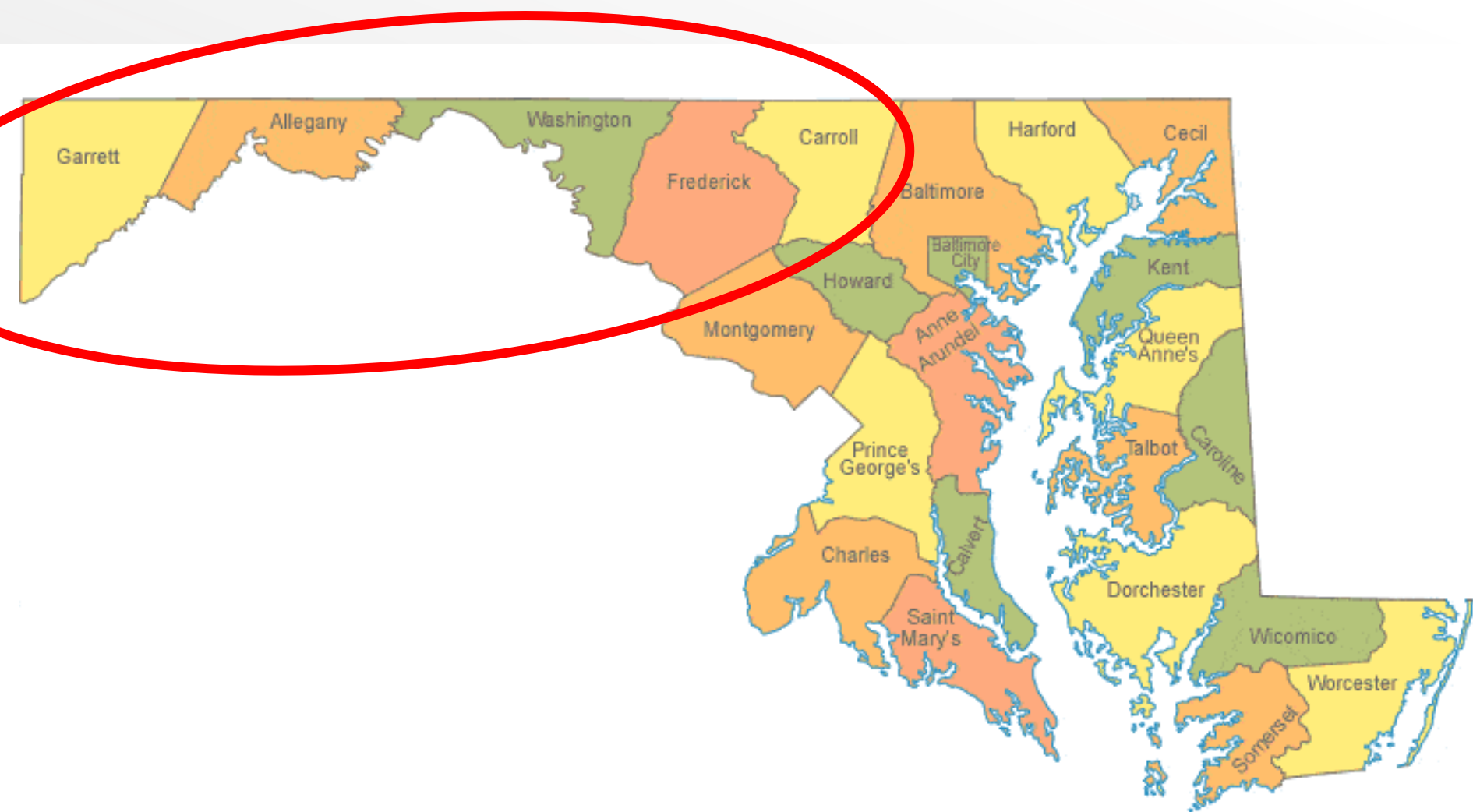


Regional Town Hall

Allegany, Carroll, Frederick, Garrett, & Washington Counties

Washington County Board of Education

March 26, 2019



“Just Like Me” Introductions

I am going to say a statement. If you agree with it, or if it is something that happens to you, raise your hand and say:

“Just like me.”



“Just Like Me” Introductions

Example

I am in Hagerstown, Maryland.



“Just Like Me” Introductions

Example

I don't care about children.



“Just Like Me” Introductions

I cried when the University of Maryland lost to LSU in the NCAA basketball tournament.



“Just Like Me” Introductions

I am a parent of a young child.



“Just Like Me” Introductions

I work am an early childhood educator.



“Just Like Me” Introductions

I work for a local human service agency.



“Just Like Me” Introductions

I work in the public education system as a teacher or administrator.



“Just Like Me” Introductions

I work in higher education.



“Just Like Me” Introductions

I work for an organization that advocates for young children.



“Just Like Me” Introductions

I work for or with the public libraries.



“Just Like Me” Introductions

I want to make a positive difference in the lives of young children in Maryland by working to support their lifelong health and academic success.



Agenda

- **Welcome**
- **State Partners Presentations**
- **Building a Birth through Five System**
 - *Town Hall Discussion*
 - *Needs Assessment Survey*
- **Community Partners**



Handouts On-line

<https://earlychildhood.marylandpublicschools.org/townhalls>

The screenshot shows the homepage of the Maryland Department of Education's Division of Early Childhood. The header includes the Maryland.gov logo, navigation links for Phone Directory, State Agencies, and Online Services, and a Log in button. The main banner features the Department of Education logo, the text "Division of Early Childhood Supporting Child Care and Early Learning", a search bar, and a language selection dropdown. Below the banner is a navigation menu with links for Families, Child Care Providers, PreK-Grade 2, Trainers, News & Announcements, and Careers. A yellow banner announces "National Child and Adult Care Food Program Week March 17-23, 2019" and includes a red button with the text "NATIONAL CHILD AND ADULT CARE FOOD PROGRAM WEEK".

2019 Regional Town Hall Meetings



Maryland was recently awarded a \$10.6 million birth-through-five grant to further strengthen the State's early care and education system. Please join State and community leaders to learn more about the grant, as well as new State programs and initiatives. Come and share your insight into the needs of families and young children in your communities to inform a new early learning strategic plan for Maryland.

Each meeting will cover a variety of topics, for example:

TOWN HALL MEETING MATERIALS

March 28, 2019

April 4, 2019

April 16, 2019

April 25, 2019

May 7, 2019

May 9, 2019

May 15, 2019

May 16, 2019

May 17, 2019

[PDG B-5 Grant](#)

[Press Release](#)



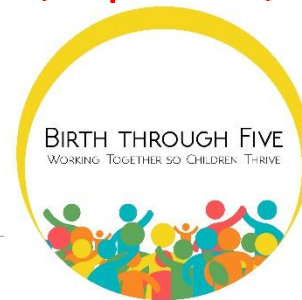
Birth through Five Vision

Maryland's vision for its B-5 Early Childhood State System is a well-coordinated and integrated system of programs, supports, and services where

every child in the state has the opportunity to access a high-quality early childhood experience, arriving at school with a healthy body, healthy mind, and the foundational knowledge and skills needed to succeed;

and that every family has access to the resources needed to be effective as their child's first and most important teacher and advocate.

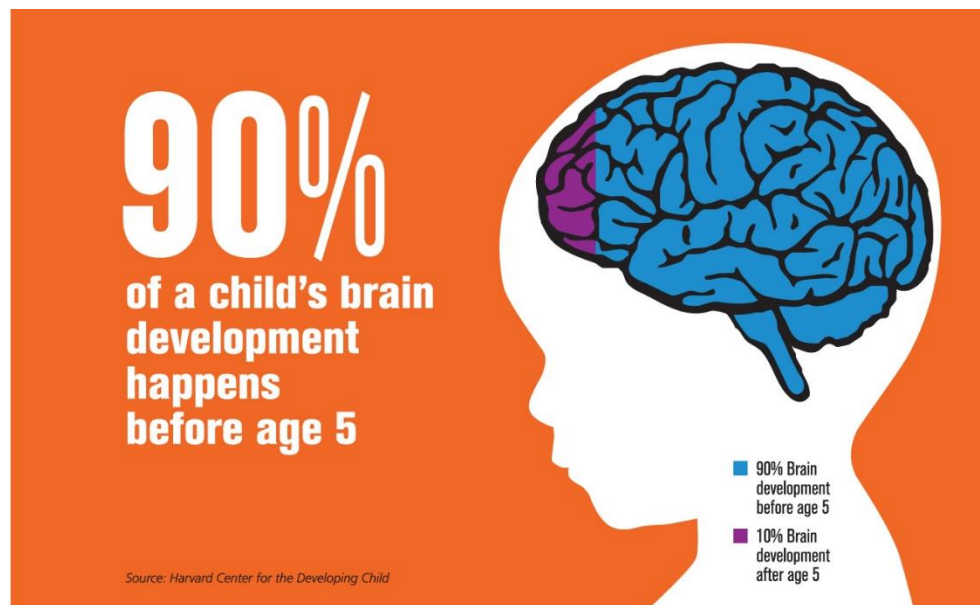
A child's access to quality early childhood experiences and the positive outcomes that result will no longer be contingent on income, race, zip code, disability status, nor English language proficiency.





Supporting the Whole Child

- The years from birth to age five are the most important period of brain development
- Early experiences lay the groundwork for a child's lifelong success
- Children who enter kindergarten not demonstrating the social-emotional, cognitive, and physical skills needed for success will continue to struggle throughout their school years.



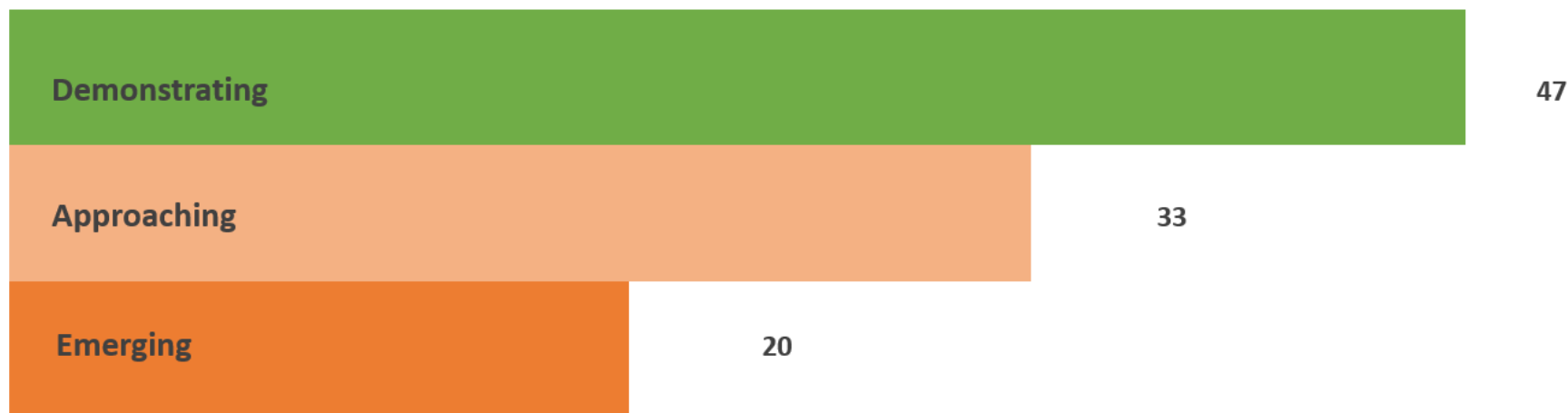


The 2018-2019
 Kindergarten Readiness
 Assessment Report

**READINESS
 MATTERS**



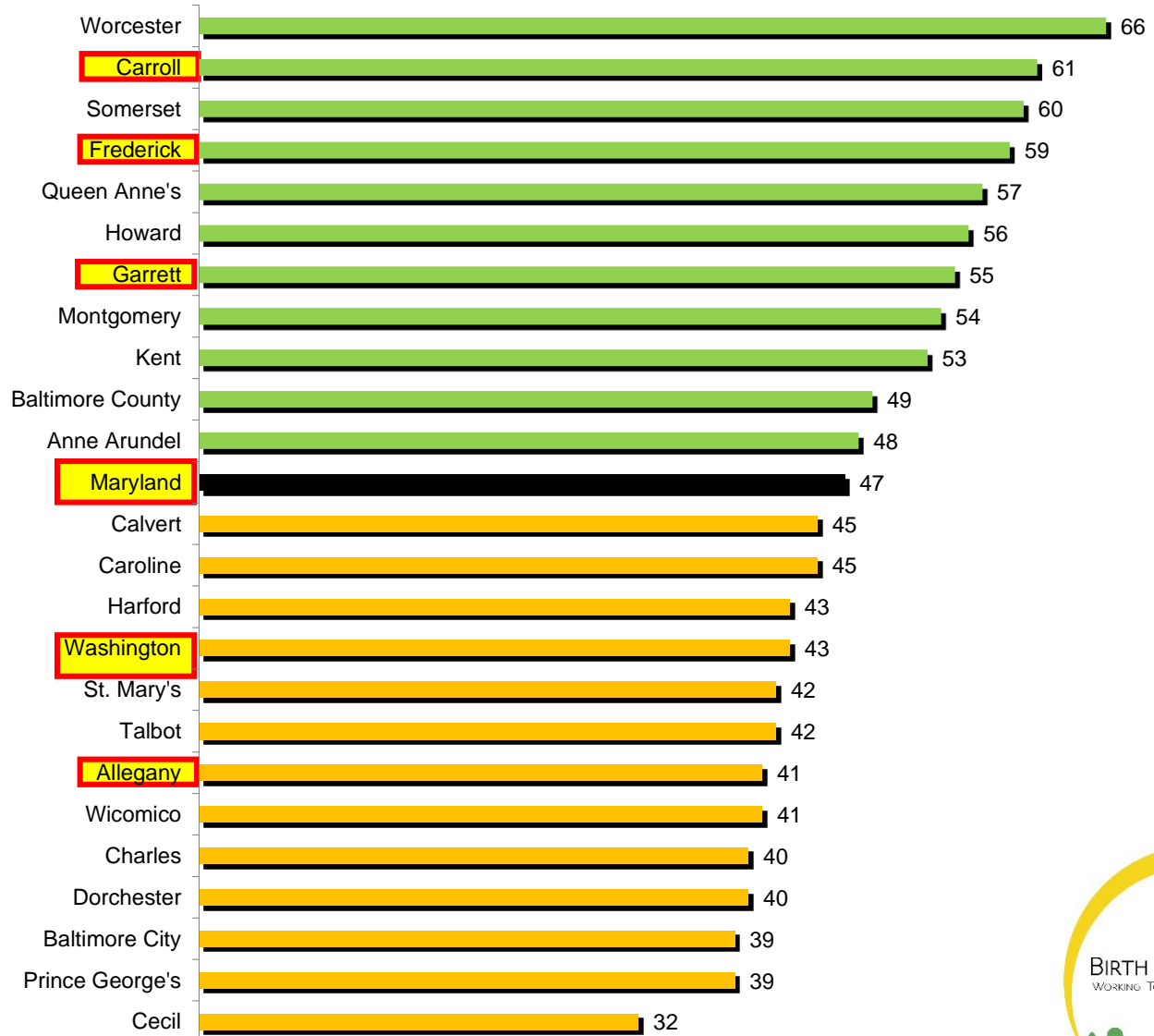
Maryland 2018-19 School Readiness Results



- 39% of kindergartners were assessed
- 47% of Maryland kindergartners **demonstrate readiness** – an increase 2% from last year
- 20% are at **high risk** – an increase of 2% from last year



2018 District Readiness Results



Race/Ethnicity DEMOGRAPHICS & READINESS

Kindergarten Enrollment

32%

African American

7%

Asian

19%

Hispanic/Latino

6%

Two or More

36%

White

Demonstrate Kindergarten Readiness

42%

57%

29%

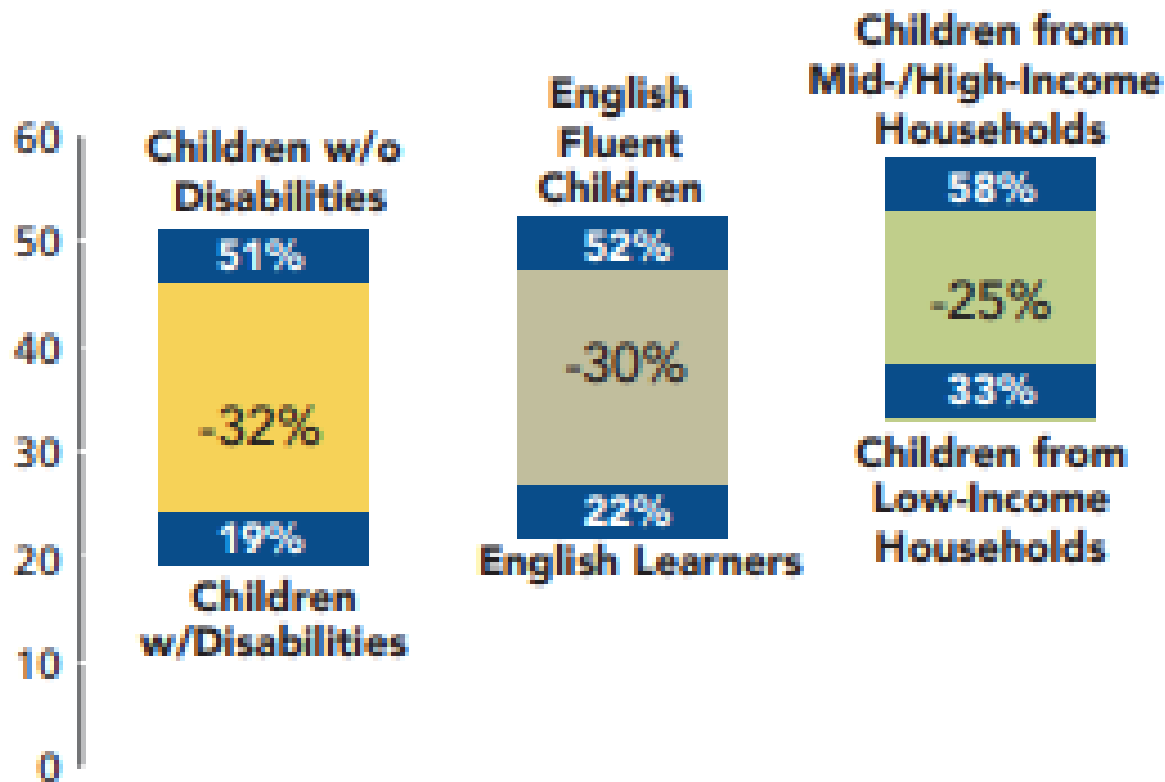
53%

58%



Subgroup

DEMOGRAPHICS & READINESS



Maryland Child Care Scholarship Program

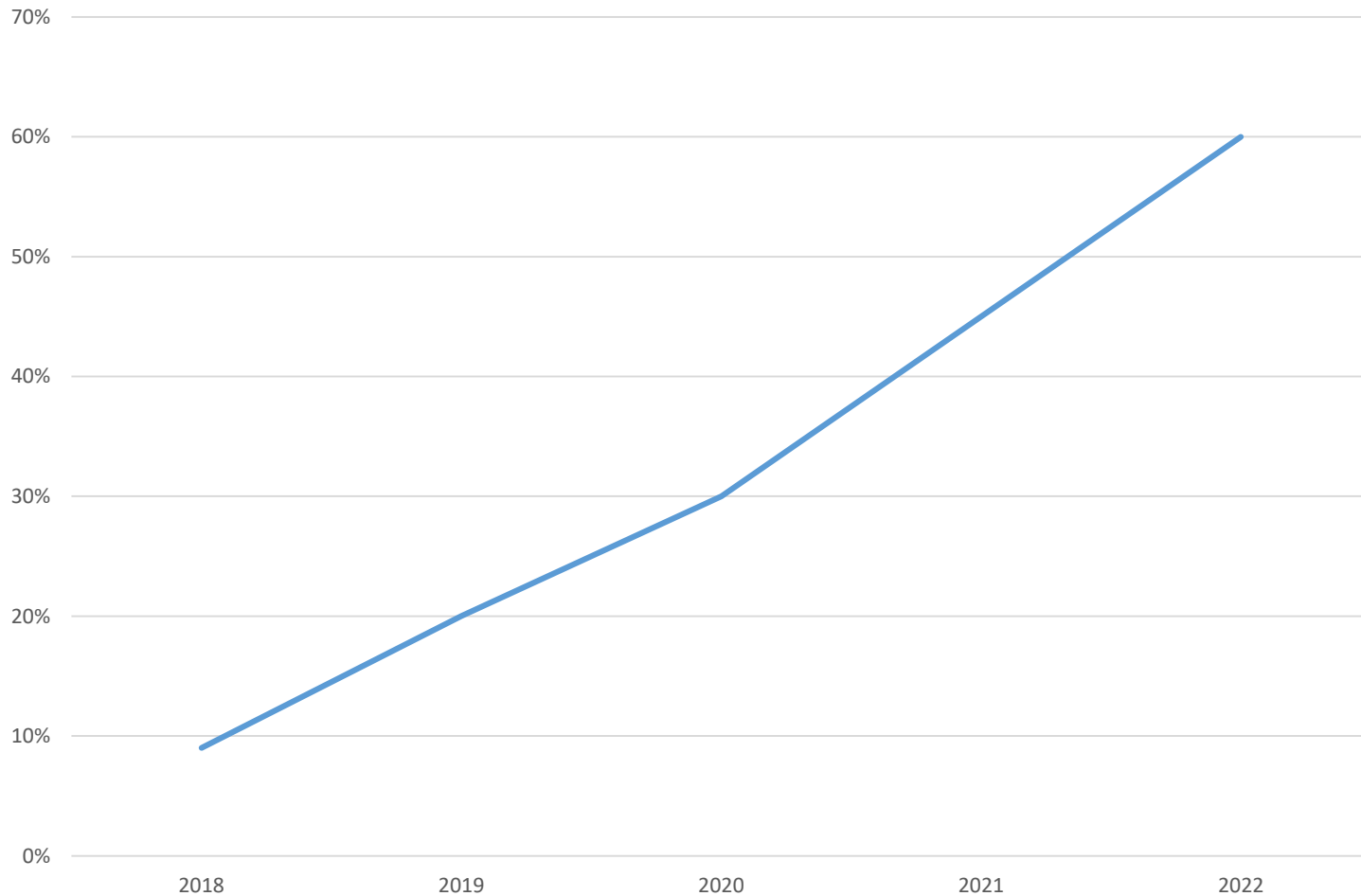
Income Eligibility Levels

Family Size	Gross Countable Income
Family of 2	\$48,637
Family of 3	\$60,081
Family of 4	\$71,525
Family of 5	\$82,969
Family of 6	\$94,413
Family of 7	\$96,558
Family of 8	\$98,704
Family of 9	\$100,850
Family of 10	\$102,996

Eligible children are younger than 13 years old without a disability, or younger than 19 years old with a disability.



Child Care Scholarship Value (Percent of the Market Rate)



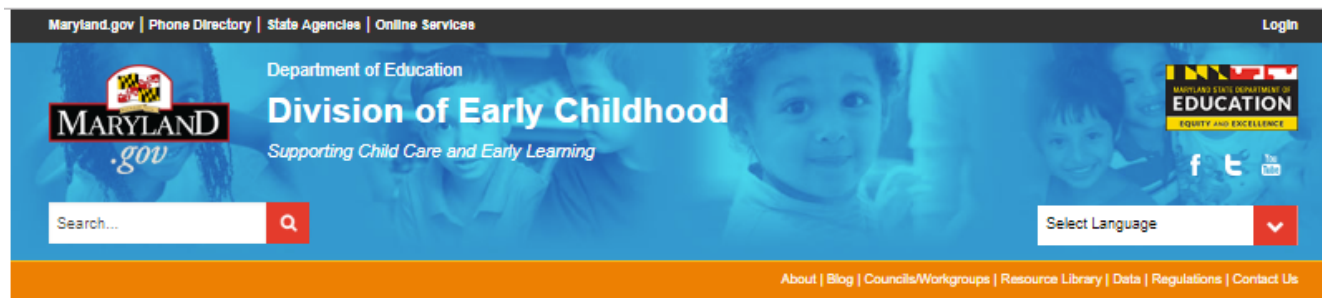
56% of all eligible child care programs are participating in Maryland EXCELS – *a 5% increase from March 2018.*

Maryland EXCELS Quality Rated Programs March 2019	
Quality Rating	# of Programs
1	2,731
2	394
3	542
4	64
5	342
Total	4,073



Birth through Five Grant

<https://earlychildhood.marylandpublicschool.org/pdg>



[Home](#) > [Preschool Development Grants Birth through Five \(PDG B-5\)](#)



Preschool Development Grants Birth through Five (PDG B-5)

In December of 2018, 45 States/Territories received a [Preschool Development Birth through Five \(PDG B-5\) Initial Grant Award](#) from the U.S. Departments of Health and Human Services and Education (Departments).

The PDG B-5 grants, which differ significantly from the previous Preschool Development Grants, are designed to fund states to conduct a comprehensive statewide birth through five needs assessment followed by in-depth strategic planning, while enhancing parent choice and expanding the current mixed delivery system consisting of a wide range of provider types and settings, including child care centers and home-based child care providers, Head Start and Early Head Start, state pre-kindergarten, and home visiting service providers across the public, private and faith-based sectors.

CLICK HERE
TO FIND OUT
ABOUT
REGIONAL
TOWN
HALLS

IN THIS SECTION

[CCDF State Plan](#)
[Race to the Top Grant](#)
[PDG B-5](#)



Selected Projects

- **Needs Assessment:** 9 Regional Town Halls (March to May), Focus Groups, Surveys
- Grants to all 24 local Early Childhood Advisory Councils
- *Children Study their World* curriculum for 4-year-olds
- Modernization of the early childhood data system
- Supporting child care programs to reach higher levels in Maryland EXCELS
- Higher Education Inventory
- Family engagement activities
- Grants to libraries to support early childhood education
- Addressing the needs of English Learners



Focus Groups

- Working with MAEC, we will be conducting 20 focus groups in four regions with parents, family care providers, teachers in all settings, and other stakeholders
- Spanish language groups will be available for Parents and Family Care Providers
- Focus groups will be conducted in the:
 - **West** (Garrett, Allegany, Washington, Frederick)
 - **East** (Kent, Queen Anne's Caroline, Talbot, Dorchester, Wicomico, Somerset, Worcester)
 - **South** (Montgomery, Howard, Anne Arundel Prince George's Calvert, Charles and St. Mary's)
 - **North** (Baltimore City, Baltimore County, Cecil, Harford, Carroll)



Focus Groups

To volunteer for a focus group you can –

- Use the QR code on the flyer being passed out by the staff
- Use the following link to register: <http://bit.ly/2Omrkal>
- Use the link after you've finished the survey
- Fill out a paper form on the back of the flier



MARYLAND DEPARTMENT OF HEALTH

Home Visiting in Maryland

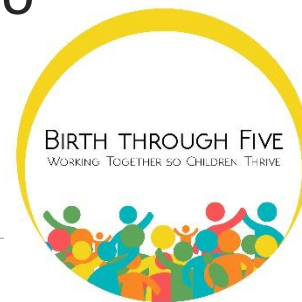
Maternal Infant and Early Childhood Home Visiting



MARYLAND
Department of Health

Evidence-Based Home Visiting

- Strategy in the early childhood system of care to address maternal, child and family health and achievement outcomes
- Support prenatally and throughout the child's first two to five years
- Voluntary program for at risk families
- Evidence-based models have been shown to improve maternal and child outcomes by connecting families to essential community services



Evidence-Based Home Visiting

Regular home visits ensure:

- Improve maternal health
- Strengthen parent-child relationships
- Promote healthy development of children's cognitive, physical and social-emotional growth
- Reduce the risk factors for child abuse and neglect



Maryland in Numbers

Maryland	Number	Source
Women of Child Bearing Age	1,647,570	*
Children Under Five	366,750	*
Families in Poverty	1,469,830	**

*2013-2017 American Community Survey 5-Year Estimates

**2017 American Community Survey 1-Year Estimates



Maryland Snapshot

Families enrolled in Home Visiting in 2017:

- 4,602 families served
- 3,947 children age zero to five served



Child Health Measures

From 2017 state home visiting survey:

- 95 percent of children are up to date with most recent well-child visit
- 74 percent of children are screened for child development; 72 percent for social emotional development
- 14 percent of children screened suspected of developmental delay; four percent suspected of social emotional delay
- Five percent of children served receive IDEA Part B or C services



State Health Measures

Maternal and family health measures from 2017 state home visiting survey include:

- 73 percent of women screened for maternal depression
- 92 percent of women screened for substance use
- 85 percent of women screened for high parenting stress
- 72 percent of women have improved parent-child relationship
- 94 percent of women screened for intimate partner violence



Evidence-Based Programs

- Early Head Start (EHS)
- Healthy Families America (HFA)
- Home Instruction for Parents of Preschool Youngsters (HIPPY)
- Nurse Family Partnership (NFP)
- Parent as Teachers (PAT)



Maryland Legislation

Home Visiting Accountability Act of 2012

- Aligns Maryland state funding of evidence-based home visiting with federal policy
- Requires a biannual report to the governor on the outcomes related to state-funded home visiting





Maryland Department of Human Services

Overview & Initiatives





Mission

The Maryland Department of Human Services (DHS) is the state's primary social service provider, serving over one million people annually. Through our 24 local departments of social services, we aggressively pursues opportunities to assist people in economic need, provide preventive services, and protect vulnerable children and adults in each of Maryland's 23 counties and Baltimore City.



Supplement Nutrition Assistance Program (SNAP)



**SFY 2018
Monthly Average**

Number of Children Served- 280,312

Number of Families Served- 346,312



Temporary Assistance for Needy Families (TANF)



SFY 2018

Number of Children Served- 34,400

Number of Families Served- 18,512



TANF Initiative

Transitional Support Services Program

Effective SFY 20 and in response to the Two-Gen Commission's recommendation, the Governor's Allowance includes \$6.3 million to continue TANF customer benefits for three months after the participant obtains employment. This initiative rewards TANF customers who obtain employment and also assists families with their transition from welfare to work as it lessens the effect of the benefit cliff immediately upon obtaining employment.



Office of Home Energy Programs OHEP



SFY 2018

Number of Families Served
MEAP (Heating) Benefits- 97,477

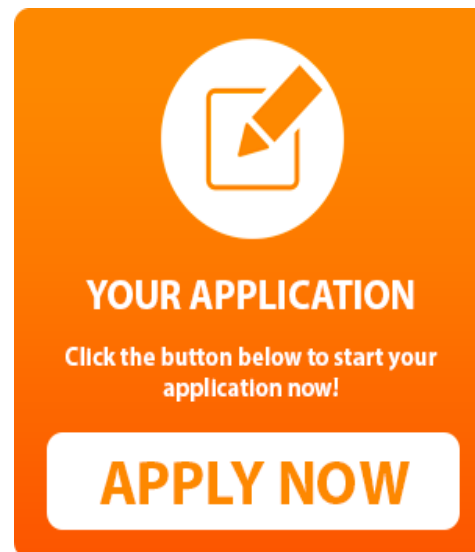
Number of Families Served EUSP
(Electric) Benefits- 94,655



Applying for Benefits

Applications may be submitted online at:

<https://mydhrbenefits.dhr.state.md.us/dashboardClient/#/home>



Applying for Benefits

Customers may submit applications in-person at the following locations:

<p><u>Allegany County DSS</u> 1 Frederick Street Cumberland, MD 21502</p> <p>OHEP Only: Allegany County HRDC, Inc. 125 Virginia Avenue P.O. Box 2006 Cumberland, MD 21502</p>	<p><u>Frederick County DSS</u> 1888 North Market Street, PO Box 237 Frederick, MD 21705</p> <p>OHEP Only: Frederick CAA 420 E Patrick Street Frederick, MD 21701</p>	<p><u>Washington County DSS</u> 122 North Potomac Street Hagerstown, MD 21740</p> <p>OHEP Only: Washington County CAC 117 Summit Avenue Hagerstown, MD 21740</p>
<p><u>Carroll County DSS</u> 1232 Tech Court Westminster, MD 21157</p> <p>OHEP Only: HSP of Carroll County, Inc. 10 Distillery Drive Westminster, MD 21158</p>	<p><u>Garrett County DSS</u> 12578 Garrett Highway Oakland, MD 21550</p> <p>OHEP Only: Garrett County CAC 104 E. Center Street Oakland, MD 21550</p>	



Family Investment Administration

Income Guidelines as of March 2019

	Temporary Cash Assistance	Food Supplement Program				Temporary Disability Assistance Program	Public Assistance to Adults	Office of Home Energy Programs (Heating/Energy Assistance)
# of People in the Household	Max Benefit Amount with No Income*	Gross Monthly Income- under 130% of FPL*	Maximum Net Income- under 100% of the FPL*	Gross Monthly Disabled/Elderly Income- under 165% of FPL*	Maximum Benefit Amount with No Income	Maximum Benefit Amount with No Income	Assistance is Determined Based on Type and Level of Care	Gross Monthly Income- under 175% of FPL
1	\$320	\$1316	\$1,012	\$1670	\$192	\$195		\$1,770
2	\$561	\$1784	\$1,372	\$2,264	\$353			\$2,400
3	\$709	\$2,252	\$1,732	2,858	\$505			\$3,030
4	\$849	\$2,720	\$2,092	3,452	\$642			\$3,660
5	\$985	\$3,188	\$2,452	4,046	\$762			\$4,290
6	\$1,083	\$3,656	\$2,812	4,640	\$914			\$4,920
7	\$1,217	\$4,124	\$3,172	5,234	\$1,0011			\$5,550
8	\$1,339	\$4,592	\$3,532	5,828	\$1,155			\$6,180
Add'l person		\$468	\$360	\$594	\$144			\$630

*FPL=Federal Poverty Level



Questions or Comments?



Stakeholder Survey

- Please take a moment to fill out the stakeholder survey.
- Your responses will help us improve early childhood services for children and families.
- Use your smartphone by opening your camera and pointing it to the QR code on your agenda.
- Or you can type in this link in your web browser: <http://bit.ly/B25Survey>
- If you don't have a phone, or prefer a paper survey, please let us know.
- For each statement, please select:
strongly agree / agree / disagree / strongly disagree or *I don't know*
- Your responses are strictly confidential and anonymous.
- Thank you for your cooperation in completing the survey.

